

RESOLUTION NO. 2019 - 220

A RESOLUTION AUTHORIZING THE PURCHASE OF ONE (1) ALTEC MODEL AN55E-OC AERIAL DEVICE WITH MATERIAL HANDLING BUCKET TRUCK, FROM ALTEC INDUSTRIES, INC., 33 INVERNESS CENTER PARKWAY, BIRMINGHAM, AL 35242, IN THE AMOUNT OF \$214,539.00, PURSUANT TO A NATIONAL COOPERATIVE CONTRACT AGREEMENT WITH NATIONAL JOINT POWERS ALLIANCE (NJPA) CONTRACT #012418-ALT.

WHEREAS, the City of Vineland Department of Electric Utility – Distribution Division is in need of One (1) Altec Model AN55E-OC Aerial Device with Material Handling Bucket Truck and;

WHEREAS, the City of Vineland is a member of a National Cooperative Purchasing Agreement known as the National Joint Powers Alliance (NJPA) under member number 19409- and, NJPA is a national cooperative contract organization; and,

WHEREAS, NJPA, National Cooperative Purchasing Program has acted as lead agency and awarded Contract #012418-ALT, Utility Tree Care, Lights and Sign Equipment. Specific information regarding the contract may be found on the NJPA website at: [www.njpacoop.org](http://www.njpacoop.org) and,

WHEREAS, N.J.S.A. 52:34-6.2 permits the City of Vineland to purchase the Altec Model AN55E-OC Bucket Truck using the offered National Cooperative Contract without public bidding, subject to the submittal and acceptance of certain documentation by ALTEC Industries, Inc.;

WHEREAS, the City of Vineland intends under NJPA, under the Category: Utility Tree Care, Lights and Sign Equipment, Contract #012418-ALT, to purchase from Altec Industries, Inc., 33 Inverness Center Parkway, Birmingham, AL 35242 One (1) Altec Model AN55E-OC Aerial Device with Material Handling Bucket Truck, in an amount not to exceed \$214,539.00, as listed in the Quotation made available through the NJPA.

WHEREAS the Director of Municipal Utilities and the Qualified Purchasing Agent, with the concurrence of the Business Administrator, recommend the use of the National Cooperative Pricing through NJPA for this procurement;

WHEREAS, notice of the within purchase has been published on April 15, 2019, with a 10-day comment period as required by Local Finance Notice 2012-10 and;

WHEREAS, the City of Vineland Purchasing Agent has determined that the use of the offered National Cooperative Contract will result in cost savings after all factors, including charges for service, material and delivery have been considered and has verified that such equipment is not available through State Contract awarded by the Division of Purchase and Property in the New Jersey Department of the Treasury pursuant to N.J.S.A. 40A:11-12; and

REQUEST FOR RESOLUTION  
FOR COOPERATIVE CONTRACT AWARDS  
UNDER 40A:11-12, N.J.A.C. 5:34-7.29 & LFN 2012-10  
(REQUIRED FOR PURCHASES OVER \$17,500.00)



5-2-19  
(DATE)

1. Goods or Services (detailed description): ALTEC ANSSE-OC AERIAL  
DEVICE WITH MATERIAL HANDLING

2. Amount to be Awarded: \$ 214,539

- Encumber Total Award  
 Encumber by Supplemental Release

3. Budgeted: By Ordinance No. \_\_\_\_\_  
Or Grant: Title & Year \_\_\_\_\_

4. \*\*Account Number to be Charged: 9-05-55-512-9003-52000-E392

5. Contract Period (if applicable): \_\_\_\_\_

6. Date to be Awarded: \_\_\_\_\_

7. Recommended Vendor and Address: ALTEC INDUSTRIES INC

8. Justification for Vendor Recommendation: (attach add'l information for Council review)

\_\_\_\_\_  
\_\_\_\_\_  
\_\_\_\_\_

Type of Contract:  State  National  Regional  County

Vendor's Cooperative Contract # SOURCEWELL 012418-ALT

9. Evaluation Performed by: DON SCHULTZ


10. Approved by: [Signature]

11. Attachments:

- Awarding Proposal  
 Other: \_\_\_\_\_

- Send copies to:  
Purchasing Department  
Business Administration

\*\*If more than one account #, provide break down

		Quotation Number: 476447-2
ustries, Inc.		Sourcewell Contract #: 012418-ALT
		Date: 4/29/2019
Quoted for: City of Vineland		
Altec Account Manager: Dave Brobst		
Phone: 570-899-3913 / Email: David.Brobst@Altec.com		
Quoted by: Karen Barbini		
<b>REFERENCE ALTEC MODEL</b>		
55E-OC	Overcenter Articulating Aerial Device with Material Handling, Extended Side Reach with X-Frame Outriggers (Insulated)	\$181,372
<b>(A.) SOURCEWELL OPTIONS ON CONTRACT (Unit)</b>		
1		
2		
3		
4		
<b>(A1.) SOURCEWELL OPTIONS ON CONTRACT (General)</b>		
1	HRS HOSE REEL. Spring Loaded for Mounting 25' Conductive Hoses with HTMA Quick Couplings that Come with the Lower Tool Circuit. When it is an available option, Lower Tool Circuit Must be Ordered Separately.	\$1,392
2	LTC LOWER TOOL CIRCUIT	\$374
3	SPOT3 FOUR (4) POINT STROBE SYSTEM (LED)	\$561
4	TBE ELECTRIC TRAILER BRAKE CONTROLLER. Controls Trailers with Electric Brakes, Wired to 7-Way Plug Next to Pintle Hook	\$233
5		
6		
		<b>SOURCEWELL OPTIONS TOTAL:</b> \$183,932
<b>(B.) OPEN MARKET ITEMS (Customer Requested)</b>		
1	UNIT	
2	UNIT & HYDRAULIC ACC	
3	BODY Altec steel service body, per specs	\$13,834
4	BODY & CHASSIS ACC Body accessories, per specs	\$1,631
5	ELECTRICAL Electrical accessories, per specs	\$4,110
6	FINISHING Finishing details, per specs	\$2,500
7	CHASSIS 2020 Freightliner M2-106 4 x 2 Chassis, including 5 year/100,000 mile chassis extended warranty, including engine and transmission	\$4,232
8	OTHER 5-year extended warranty - labor, material (NO TRAVEL)	\$3,500
		<b>OPEN MARKET OPTIONS TOTAL:</b> \$29,807
		<b>SUB-TOTAL FOR UNIT/BODY/CHASSIS:</b> \$213,739
		Delivery to Customer: \$800
		<b>TOTAL FOR UNIT/BODY/CHASSIS:</b> \$214,539
<b>(C.) ADDITIONAL ITEMS (items are not included in total above)</b>		
1		
2		
3		
4		
Valid for 30 days**		
<b>NOTES</b>		
PAINT COLOR: White to match chassis, unless otherwise specified		
WA		
RR		
ANT		
TO ORDER: To order, please contact the Altec Account Manager listed above.		
CHASSIS: Per Altec Commercial Standard		
DELIVERY: No later than 330 - 360 days ARO, FOB Customer Location		





January 8, 2019  
Our 90th Year

**Ship To:**  
CITY OF VINELAND (NJ)  
PO BOX 1508  
ATTN ACCOUNTS PAYABLES  
VINELAND, NJ 08362-1508  
US

**Bill To:**  
CITY OF VINELAND (NJ)  
PO BOX 1508  
ATTN ACCOUNTS PAYABLES  
VINELAND, NJ 08362-1508  
United States

Attn:  
Phone: 856-794-4000  
Email:

**Altec Quotation Number:** 476447 - 1  
**Account Manager:** Dave Brobst  
**Technical Sales Rep:** Karen Barbini

<u>Item</u>	<u>Description</u>	<u>Qty</u>
	<u>Unit</u>	
1.	Altec Model AN55E-OC Articulating Overcenter Aerial Device with a fiberglass upper boom and fiberglass insulator in the lower boom and a proportional joystick upper control and toggle switches. Built in accordance to ALTEC's standard specifications and to include the following features:	1
A.	Ground to Bottom of Platform Height: 56.5 ft at 0 ft from centerline of rotation (17.2 m at 0 m)	
B.	Working Height: 61.5 ft (18.7 m)	
C.	Maximum reach to edge of platform: 43.1 ft at 28.6 ft platform height (13.1 m at 8.7 m)	
D.	Rotation: Continuous	
E.	Upper Boom Articulation: 0 to 196 degrees. Insulator provides a minimum of 156 in (396 mm) of isolation.	
F.	Lower Boom Articulation: 0 to 120 degrees. Insulator provides a minimum of 24 in (610 mm) of isolation.	
G.	Lower boom stow protection to help prevent excessive down pressure by boom structures when stowing.	
H.	Upper Controls: The upper controls system includes a proportional joystick upper control and toggle switches.	
I.	The Altec ISO-Grip System (U.S. Patent No. 7,416,053) includes the following boom tip components that can provide an additional layer of secondary electrical contact protection. This is not a primary protection system. Control Handle is a single handle controller incorporating high electrical resistance components that is dielectrically tested to 40 kV AC with no more than 400 microamperes of leakage. The control handle is green in color to differentiate it from other non-tested controllers. The handle also includes an interlock guard that reduces the potential for inadvertent boom operation. Auxiliary control covers are non-tested blue silicon covers. The control console in non-tested non-metallic control console plate. The boom tip covers are non-tested non-metallic and are not dielectrically tested, but they may provide some protection against electrical hazards.	
J.	Lower Controls: A lower control station is located on the curb side of the turntable with the control valves under a protective cover. A selector valve at the lower	

We Wish To Thank You For Giving Us The Pleasure  
And Opportunity of Serving You

UTILITY EQUIPMENT AND BODIES SINCE 1929

Item	Description	Qty
	control station is provided to override the upper controls.	
K.	Control purging system contains a continuous automatic purge feature, which provides for oil flow through the control system, to eliminate trapped air. This feature is operational any time the selector at the lower controls is in the upper control position and the pump is operating.	
L.	The platform is leveled by a single leveling chain with fiberglass rods in upper and lower boom, designed to maintain the dielectric integrity of the aerial device. Controls for tilting the platform are located at the platform. The mechanism for tilting the platform includes one dual acting cylinder incorporating counterbalance load holding valves to lock the platform in the event of hydraulic line failure.	
M.	Outrigger/boom interlock system prevents boom from being unstowed until outriggers have been at least partially deployed.	
N.	Outrigger/Unit selector control is located near the outrigger controls, allows operator to divert hydraulic oil from machine circuit for outrigger operation. This reduces the potential for inadvertent outrigger movement during machine operation if outrigger controls are bumped.	
O.	Outrigger motion alarm provides audible alarm when any of the outriggers are in motion.	
P.	Diagnostic Pressure Test Quick Disconnect Couplings: are located at the turntable to allow a mobile service technician to quickly and easily attach a test gauge to verify system and tool circuit pressure. This convenient troubleshooting feature saves time and reduces the risk of high pressure oil sprays.	
Q.	Unit meets or exceeds ANSI 92.2 standards.	
2.	375 - Automatic stow system	1
3.	217- Single, two-man platform mounted on curbside, 24 x48 x 42 inches (610 x 1219 x 1067 mm). Platform is rated at 700 pounds (317.5 kg) and rotates 90 degrees to end of boom. Includes two sets of quick disconnect couplings and controls for hydraulic tools. Includes hydraulically articulating and extending material handling jib with winch and rope mounted on opposite side of upper boom.	1
A.	Material handling jib capacity is in addition to platform capacity. Jib and winch system includes hydraulic tool lines in boom to furnish 8.0 gpm at 2,000 psi (30.3 lpm/13 800 kPa) and includes:	
B.	Material handling, hydraulically articulated jib, -30 degree to +90 degree tilt angle (relative to the upper boom). Jib also extends from 43 to 67 inches ( 1092 x 1702 mm) in five pinning positions.	
C.	One (1) piece 4.0 inch (101.6 mm) square jib	
D.	Hydraulically powered winch rated to 2,000 pounds (907.2 kg) full drum, mounted on the side of the upper boom	
E.	80 feet of 7/16 inch (24.4 m of 11.1 mm) double-braided synthetic rope	
F.	Control valves at platform for hydraulic tools, platform rotation, jib tilt, jib extend and winch control	
G.	Auxiliary winch line control valve and platform rotation valve at the turntable to allow rescue	
H.	Valve at boom tip relieves pressure from quick disconnect couplings in Off position. Open-center or closed-center tools may be operated from tool circuit	
I.	Fiberglass covers	
4.	Soft Platform Cover For Two Man Platform (24x48)	1
5.	259 Polyethylene platform liner for two man platform, 50 kV rating (minimum)	1
6.	Electric Over Hydraulic Outrigger Controls	1

We Wish To Thank You For Giving Us The Pleasure  
And Opportunity of Serving You

UTILITY EQUIPMENT AND BODIES SINCE 1929



<u>Item</u>	<u>Description</u>	<u>Qty</u>
7.	315 Engine start/stop with Secondary Stowage System, 12 VDC electric powered. Includes auxiliary pump and electric motor, powered by the chassis battery. Control is captive air operated from the platform and toggle switch operated from the lower controls. This option allows the operator to completely stow the booms and platform in a situation wherein the engine, PTO or pump fails.	1
8.	319 - Category C 46 kV and below	1
9.	460 - Outrigger X-Frame with flat shoe - 172.8 inch max spread	1
10.	241 - Outrigger A-Frame with Flat-shoe - provides 149 inch (3785 mm) maximum spread outside to outside of shoe.	1
11.	Powder coat unit Altec White.	1
<b><u>Unit &amp; Hydraulic Acc.</u></b>		
12.	Unit Installation Components.	1
13.	Hook, Material Handling, 1-Ton With Latch, Installed On End Of Aerial Winch Line	1
14.	Reservoir, 30 Gallon, Triangular, Mounted in Cargo Area	1
	A. Internal return filter, 10 micron absolute, fiberglass media	
	B. Ball valves in suction and return lines.	
	C. Magnetic suction strainer.	
	D. Filler/breather cap with dipstick.	
15.	AA/AN 50/55/50E/55E/60/60E AN46-OC/50-OC/55-OC/46E-OC/50E-OC/55E-OC Subbase	1
16.	Temperature Sight Gauge	1
17.	HVI-22 Hydraulic Oil (Standard).	35
18.	Standard Pump For PTO	1
19.	Hot shift PTO for automatic transmission	1
20.	Muncie PTO (Altec Standard)	1
21.	Standard Altec PTO/Machine Functionality: PTO won't engage until parking brake is set.-Once parking (holding) brake is set, PTO and machine functions are enabled.-If parking (holding) brake is disengaged, both PTO and machine functions are disabled.	1
22.	Altec recommends any connection made to the tool circuit be done with Non-Conductive hose. If ordering a Hose reel, Altec recommends ordering a hose reel with Non-Conductive hose. The lower tool circuit hoses may be, or become, conductive. Death or serious injury could occur if the unit becomes energized while lower tool circuit is in use.	1
23.	Spring Loaded Hose Reel, 50 FT Hose Capacity mounted on tailshelf, curbside.	1
24.	Install Tool Circuit For Hose Reel Installation, Below Rotation (Male Pressure, Female Return -Installed at Hose Reel)	1

We Wish To Thank You For Giving Us The Pleasure  
And Opportunity of Serving You

UTILITY EQUIPMENT AND BODIES SINCE 1929

<u>Item</u>	<u>Description</u>	<u>Qty</u>
25.	25' Non-Conductive Hose Kit, Orange, Includes Quick Disconnects and Dust Caps (Male Pressure, Female Return)	1
	<u>Body</u>	
26.	Altec Body	1
27.	Steel Body	1
28.	Body Is To Be Built In Accordance With The Following Altec Standard Specifications:	1
	A. Basic Body Fabricated From A40 Grade 100% Zinc Alloy Coated Steel.	
	B. All Doors Are Full, Double Paneled, Self-Sealed With Built-In Drainage For Maximum Weather-Tightness. Stainless Steel Hinge Rods Extend Full Length Of Door.	
	C. Heavy-Gauge Welded Steel Frame Construction.	
	D. Integrated Door Header Drip Rail At Top For Maximum Weather Protection.	
	E. Fender Panels Are Either Roll Formed Or Have Neoprene Fenderettes Mechanically Fastened.	
	F. Steel Treated For Improved Primer Bond And Rust Resistance.	
	G. Automotive Type Non-Porous Door Seals Fastened To The Door Facing.	
	H. B-Line Channel Installed In Compartments	
29.	Smooth Galvanneal Steel Floor	1
30.	Aerial Service Line With Step (ASLS)	1
31.	Finish Paint Body Altec White	1
32.	Undercoat Body	1
33.	170" Estimated Body Length (Engineering To Determine Final Length)	1
34.	94" Body Width	1
35.	46" Body Compartment Height	1
36.	18" Body Compartment Depth	1
37.	5.5 Inch Drop-In Wood Cargo Retaining Board At Rear Of Body	1
38.	5.5 Inch Drop-In Wood Cargo Retaining Board At Top Of Side Access Step	1
39.	Adhesive Strip Lighting (LED) Around Top And Sides Of Compartment Door Facings	9
40.	Stainless Steel Rotary Paddle Latches With Keyed Locks	9
41.	All Locks Keyed Alike Including Accessories (Preferred Option)	1
42.	Standard Master Body Locking System (Standard Placement Is At Rear. Sidepacks With A Throughshelf/Hotstick Door At Rear, Standard Placement Is At The Front)	9
43.	Gas Shock (Gas Spring) Rigid Door Holders On All Vertical Doors	1
44.	Chains On All Horizontal Doors	1

We Wish To Thank You For Giving Us The Pleasure  
And Opportunity of Serving You

UTILITY EQUIPMENT AND BODIES SINCE 1929





<u>Item</u>	<u>Description</u>	<u>Qty</u>
45.	One Chock Holder On Each Side of Body With Retaining Lip In Fender Panel	1
46.	Hotstick Shelf Extending From Rear Of First Vertical To Rear Of Body On Streetside	1
47.	Two Hotstick Brackets On Streetside	1
48.	Standard Drop-Down Hotstick Door For One (1) Shelf On Streetside, Stainless Steel Slam Paddle Latch With Keyed Lock	1
49.	1st Vertical (SS) - Adjustable Shelf With Removable Dividers On 4" Centers	3
50.	2nd Vertical (SS) - Locking Swivel Hooks On An Adjustable Rail - Left Wall	1
51.	2nd Vertical (SS) - Locking Swivel Hooks On An Adjustable Rail - Rear Wall	4
52.	2nd Vertical (SS) - Locking Swivel Hooks On An Adjustable Rail - Right Wall	1
53.	3rd Vertical (SS) - Locking Swivel Hooks On An Adjustable Rail - Left Wall	1
54.	3rd Vertical (SS) - Locking Swivel Hooks On An Adjustable Rail - Rear Wall	4
55.	3rd Vertical (SS) - Locking Swivel Hooks On An Adjustable Rail - Right Wall	1
56.	1st Horizontal (SS) - Fixed Shelf Extending Through Rear Vertical	1
57.	Rear Vertical (SS) - Outrigger Housing, With Outrigger Pin Access As Needed	1
58.	1st Vertical (CS) - Adjustable Shelf With Removable Dividers On 4" Centers	3
59.	1st Vertical (CS) - Louvered Panel On Rear Wall To Ventilate Compartment	1
60.	2nd Vertical (CS) - Locking Swivel Hooks On An Adjustable Rail - Left Wall	1
61.	2nd Vertical (CS) - Locking Swivel Hooks On An Adjustable Rail - Rear Wall	4
62.	2nd Vertical (CS) - Locking Swivel Hooks On An Adjustable Rail - Right Wall	1
63.	3rd Vertical (CS) - Gripstrut (Preferred) Access Steps w/ Two (2) Sloped Grab Handles, Vented Battery Storage (Keyed Lock)	1
64.	1st Horizontal (CS) - Adjustable Shelf With Removable Dividers On 8" Centers	2
65.	Rear Vertical (CS) - Locking Swivel Hooks On An Adjustable Rail - Left Wall	1
66.	Rear Vertical (CS) - Locking Swivel Hooks On An Adjustable Rail - Rear Wall	3
67.	Rear Vertical (CS) - Locking Swivel Hooks On An Adjustable Rail - Right Wall	1
68.	Rear Vertical (CS) - Outrigger Housing, With Outrigger Pin Access As Needed	1
69.	24" L Steel Tailshelf, Width To Match Body	1
70.	3" Fixed Steel Retaining Rail On Sides And Rear Of Tailshelf With Corner Wash-Out	1
71.	Platform Rest Socket Installed On Rear Of Tailshelf	1

We Wish To Thank You For Giving Us The Pleasure  
And Opportunity of Serving You

UTILITY EQUIPMENT AND BODIES SINCE 1929



<u>Item</u>	<u>Description</u>	<u>Qty</u>
72.	Smooth Galvanneal Steel Tailshelf	1
73.	Custom Ladder Storage (Please Specify The Following: Style, Material, Easy Retrieval Method, Retaining Method, Approximate Dimensions) Ladder box, 8 1/4" H X 20" W X 132" L, steel, powder coated white. Mounted streetside on top of body compartments.	1
74.	Additional Body Option Storage box, 12" H X 18" W X 70" L, steel, powder coated white, with one (1) smooth lid. Mounted on top of ladder box, streetside.  To have gatorhyde on top of and inside box.	1
75.	Additional Body Option Storage box, 12" H X 18" W X 132" L, with split lid and gas props. Steel, powder cated whie. Piece of Gripstrut to be added forward of box on side pack, 18" wide x 24" long.  Gatorhyde on top and inside of box.	1
76.	Additional Body Option Storage box, 12" H X 12" W X 90" L, steel, with two (2) smooth lids. To be powder coated white. Mounted underbody at rear aft of outriggers.  Gatoryhyde to be inside of box.	1
77.	Additional Body Option Storage boxes mounted between rear of cab and body, approx. 72"L x 12"H x 8"W. Exact dimensions to be determined. To be steel, powder coated white.  Gatorhyde to be inside of boxes.	4

**Body and Chassis Accessories**

78.	ICC (Underride Protection) Bumper Installed At Rear	1
79.	T-125 Style Pintle Hitch (30,000 LB MGTW with 6,000 LB MVL)	1
80.	Set Of Eye Bolts for Trailer Safety Chain, installed one each side of towing device mount.	1
81.	Eyebolt For Breakaway Cable, 1/4 Inch	1
82.	Glad Hands At Rear, Swing Away Type	1
83.	Rigid Step Mounted Beneath Side Access Steps (Installed To Extend Approx. 2" Outward)	1
84.	Compartment Top Access Step from Body Floor	1
85.	Single Platform Access, One Step Mounted to Turntable	1
86.	Platform Access Step From Top of Body Compartment	1
87.	Platform Rest, Rigid with Rubber Tube	1
88.	Lower Boom Rest Weldment	1
89.	Mounting Brackets for Lights, Located on Lower Boom Rest	1

We Wish To Thank You For Giving Us The Pleasure  
And Opportunity of Serving You

UTILITY EQUIPMENT AND BODIES SINCE 1929

<u>Item</u>	<u>Description</u>	<u>Qty</u>
90.	Plastic Outrigger Pad, 24" x 24" x 1", Black With Handle DICA	4
91.	Outrigger Pad Holder, 25" L x 25" W x 3" H, Fits 24.5" x 24.5" x 2" And Smaller Pads, Bolt-On, Bottom Washout Holes, 3/4" Lip Retainer	4
92.	Pendulum Retainers For Outrigger Pad Holders	4
93.	Mud Flaps With Altec Logo (Pair)	1
94.	Wheel Chocks, Rubber, 9.75" L x 7.75" W x 5.00" H, with 4" L Metal Hairpin Style Handle (Pair)	1
95.	Dock Bumpers (Pair), Fixed Mounting (Rectangular Bumper), Installed At Rear Frame Rails So They Are The Furthest Point Back	1
96.	No Grab Handles Required NO ACCESS FROM REAR	1
97.	Slope Indicator Assembly For Machine With Outriggers	1
98.	Cone Holder, Horizontal Style, Swing Out For Mounting On Front Bumper (Holds up to four 15"x15" large cones)	1
99.	Custom Wire Rack/Reel Wire reel spools, mounted on platform rest.	6
100.	Safety Harness & 4.5 FT Lanyard (Medium To X-large)	2
101.	Triangular Reflector Kit, Installed	1
102.	5 LB Fire Extinguisher With Light Duty Bracket, Shipped Loose	1
103.	Vinyl manual pouch for storage of all operator and parts manuals	1
104.	Outrigger Control Guards- Underhung Tailshelf Mount	1
<b><u>Electrical Accessories</u></b>		
105.	Compartment Lights Wired To Dash Mounted Master Switch	1
106.	Lights and reflectors in accordance with FMVSS #108 lighting package. (Complete LED, including LED reverse lights)	1
107.	Altec Standard Amber LED Strobe Light with Brush Guard mounted one each side on lower boom rest.	2
108.	4-Corner Strobes, Amber, LED, Two (2) Surface Mounted Lights In Grille, Two (2) Round Lights At Rear	1
109.	Dual Tone Back-Up With Outrigger Motion Alarm	1
110.	Altec Standard Multi-Point Grounding System	6
111.	Grounding Reel, Automatic Retracting, Hannay - Holds #2 GA, #1/0 GA (Max 75'), Or #2/0 GA Cable (Max 65') mount at tailshelf location, exact location to be determined.	1
112.	Grounding Cable, 2/0 GA Yellow Jacketed Cable	25

We Wish To Thank You For Giving Us The Pleasure  
And Opportunity of Serving You

UTILITY EQUIPMENT AND BODIES SINCE 1929



<u>Item</u>	<u>Description</u>	<u>Qty</u>
113.	Copper U Shaped Grounding Lug (Threaded) mounted front and rear curbside.	2
114.	Grounding Clamp, Aluminum C-Clamp Style With Smooth Jaws (Includes Ferrule and Heat Shrink Tubing)	1
115.	7-Way Trailer Receptacle (Pin Type) Installed At Rear	1
116.	Relocate Trailer Receptacle Supplied With Chassis	1
117.	Electric Trailer Brake Controller (Tekonsha Voyager #9030)	1
118.	Altec Modular Panel System (AMPS) - Includes Mounting Panel and Accessory Switches	1
119.	Inverter, 2000 Watt, Pure Sine Wave, 120 VAC (Sensata #MS2012G) mounted in 1st curbside compartment, with switch on dash.	1
120.	Deep Cycle Auxiliary Battery For Vented Applications (Group 31) mounted in side access step storage	1
121.	Power Distribution Module Is A Compact Self-Contained Electronic System That Provides A Standardized Interface With The Chassis Electrical System. (Includes Operator's Manual)	1

**Finishing Details**

122.	Powder Coat Unit Altec White	1
123.	Finish Paint Body Accessories Above Body Floor Altec White	1
124.	Altec Standard; Components mounted below frame rail shall be coated black by Altec. i.e. step bumpers, steps, frame extension, pintle hook mount, dock bumper mounts, D-rings, receiver tubes, accessory mounts, light brackets, under-ride protection, etc. Components mounted to under side of body shall be coated black by Altec. i.e. Wheel chock holders, mud flap brackets, pad carriers, boxes, lighting brackets, steps, and ladders.	1
125.	Heavy Duty Cargo Coating, Gator Hyde, Cargo Area Floor and Tailshelf on all walking surfaces, top of all boxes and inside of all boxes	1
126.	English Safety And Instructional Decals	1
127.	Vehicle Height Placard - Installed In Cab	1
128.	Placard, HVI-22 Hydraulic Oil	1
129.	Dielectric test unit according to ANSI requirements.	1
130.	Stability test unit according to ANSI requirements.	1
131.	Pre-delivery / Customer Validation Inspection Required	1
132.	Focus Factory Build	1
133.	Delivery Of Completed Unit	1

We Wish To Thank You For Giving Us The Pleasure  
And Opportunity of Serving You

UTILITY EQUIPMENT AND BODIES SINCE 1929

<u>Item</u>	<u>Description</u>	<u>Qty</u>
134.	Inbound Freight	1
135.	AN55E-OC FA Installation	1
<u>Chassis</u>		
136.	Chassis	1
137.	Altec Supplied Chassis	1
138.	2020 Model Year	1
139.	Freightliner M2-106	1
140.	4x2	1
141.	124 Clear CA (Round To Next Whole Number)	1
142.	Regular Cab	1
143.	Chassis Cab	1
144.	Chassis Color - White	1
145.	Chassis Wheelbase Length - 190	1
146.	Cummins B6.7	1
147.	250 HP Engine Rating	1
148.	Allison 3500 RDS Automatic Transmission (Left and Right Side PTO Openings Only)	1
149.	GVWR 33,000 LBS	1
150.	13,300 LBS Front GAWR	1
151.	Spring Suspension	1
152.	21,000 LBS Rear GAWR	1
153.	11R22.5 Front Tire	1
154.	11R22.5 Rear Tire	1
155.	Air Brakes	1
156.	Park Brake In Rear Wheels	1
157.	016-1C3 - Freightliner Horizontal Exhaust (Right-Horizontal-Under Cab-Horizontal)	1
158.	Freightliner - Clear Area Around Allison PTO Openings (362-1Y0) and (363-011)	1
159.	Freightliner - Radiator (950 Square Inch) for ISB/B.7 or DD8.1 (SS) (266-078)	1
160.	Freightliner - Rear Cab Crossmember Flush With Back Of Cab (561-010)	1

We Wish To Thank You For Giving Us The Pleasure  
And Opportunity of Serving You

UTILITY EQUIPMENT AND BODIES SINCE 1929



<u>Item</u>	<u>Description</u>	<u>Qty</u>
161.	Freightliner PTO Throttle Wiring for Automatic Transmission (163-004) (148-074) (87L-003)	1
162.	Freightliner Transmission Dipstick Relocated to RH Side of Transmission (346-013)	1
163.	Freightliner/Allison Body Builder Connection (34C-001)	1
164.	No Prewire Chassis	1
165.	No Idle Engine Shut-Down Required	1
166.	50-State Emissions	1
167.	Clean Idle Certification	1
168.	204-215 Freightliner 50 Gallon Fuel Tank (Left Hand Under Cab)	1
169.	23U-001, 43X-002 Freightliner 6 Gallon DEF Tank (Under Cab Left Hand)	1
170.	Chassis Without Front Frame Extensions	1
171.	Battery Under Cab Left Hand	1
172.	Air Horn Under Cab	1
173.	AM/FM Radio	1
174.	Bluetooth	1
175.	Air Conditioning	1
176.	Block Heater	1
177.	Driver Controlled Locking Differential	1
178.	Towing Package	1
179.	Trailer Air Brake Package	1
180.	Vinyl Full Bench Seat	1

**Additional Pricing**

181.	Standard Altec Warranty: One (1) year parts warranty, one (1) year labor warranty, ninety (90) days warranty for travel charges, limited lifetime structural warranty	1
------	---	---

**Miscellaneous**

182.	Ext Warranty Labor Mat. Expense (NO Travel) (Day 366-1825) Large Aerials-Mat. Handler (AA AN AM 5X)	1
------	---	---



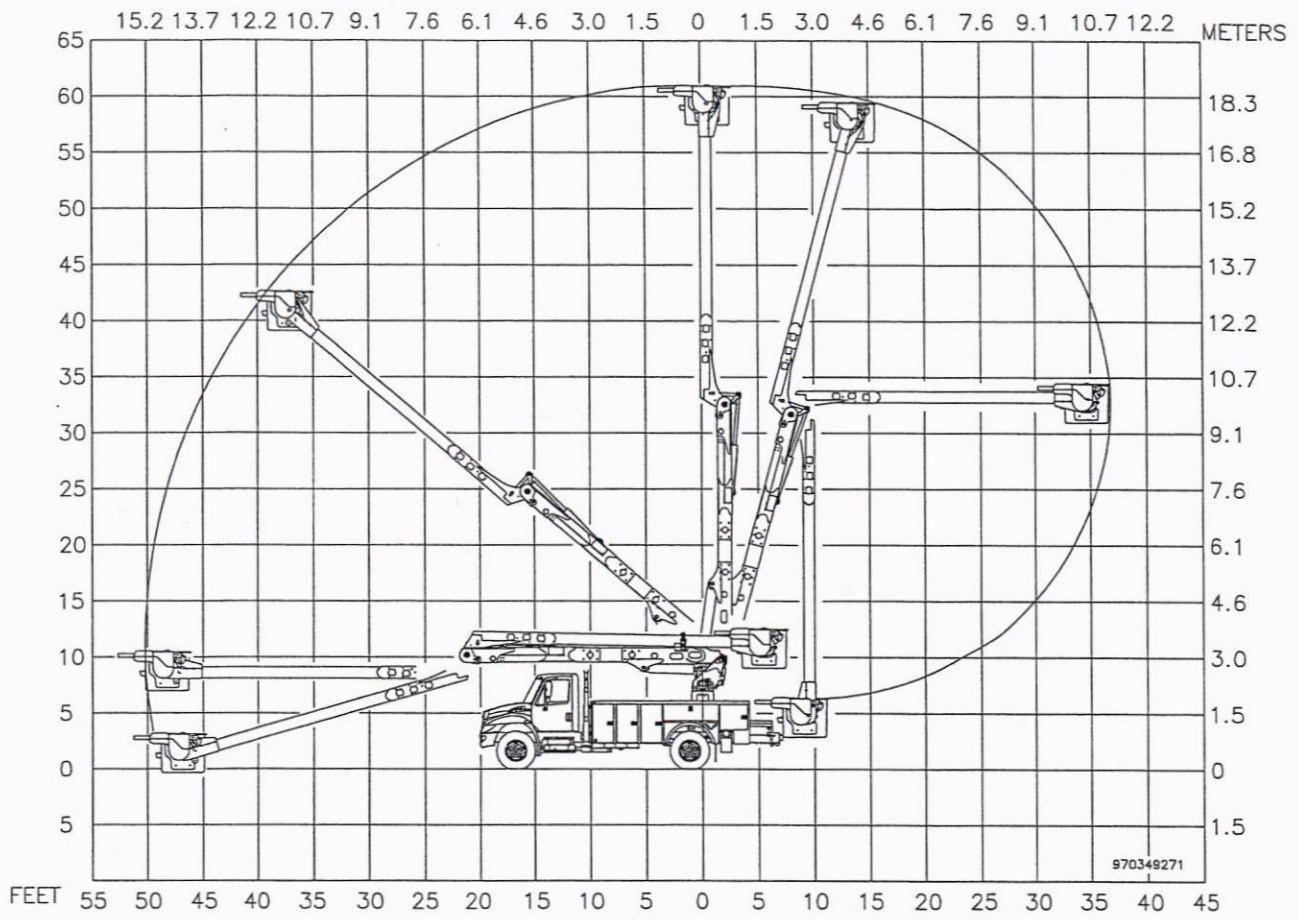
Altec Industries, Inc.

BY \_\_\_\_\_

Karen Barbini

Notes:





**AN55-OC**

WHEREAS, the availability of funds for said purchase to be awarded herein have been certified by the City Comptroller; and

WHEREAS, the City of Vineland has certified that this meets the statute and regulations governing the award of said contracts;

NOW, THEREFORE, BE IT RESOLVED BY THE COUNCIL OF THE CITY OF VINELAND, that the Purchasing Agent is authorized to prepare a purchase order to procure the One (1) Altec Model AN55E-OC Aerial Device with Material Handling Bucket Truck for a price not to exceed \$214,539.00

BE IT FURTHER RESOLVED that the purchase order shall contain a requirement that “the vendor shall maintain all documentation related to products, transactions or services under this contract for a period of five years from the date of final payment. Such records shall be made available to the New Jersey Office of the State Comptroller upon request”.

Adopted:

---

President of Council

ATTEST:

---

City Clerk